

Kaymar

Fitting Instructions



Vehicle **Mitsubishi
MQ Triton**
Year **All Models**
Type **Dual Cab Ute**
Part **Rear Bar**

Applicable to Part Numbers
K3820, KITRMQ, KITRMQ-L-JCD, KITRMQ-R-JCD

See also related fitting instructions for reversing sensors, carriers and jerry can holders

Date published February 21, 2019

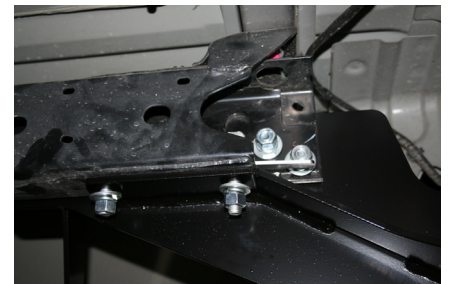
IMPORTANT - BEFORE COMMENCING INSTALLATION

Please verify the part number corresponds with the list above. Read through these instructions and check items in the supplied fitting kit matches the attached list.

IMPORTANT: If you are fitting carriers with this bar FIT CARRIERS FIRST

MITSUBISHI TRITON MQ

1. Remove bumper and towbar if fitted.
2. With the assistance of another person lift the Kaymar bar on to the vehicle being careful not to touch the body.
3. Fit M12 x 1.75 x 35mm bolt and flat washer through the two rear most holes in the bar on either side and secure with M12 flat and spring washers and nut. **DO NOT TIGHTEN.**
4. Slide the plate with two bolts welded to it inside the chassis and drop down through the bar and secure using M12 flat and spring washers and nuts. Repeat on the opposite side.



Kaymar

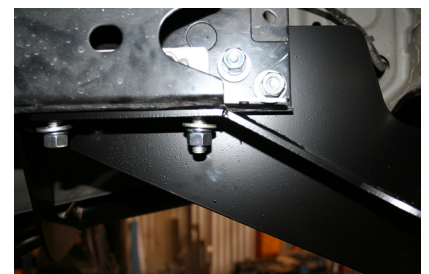
Fitting Instructions



5. Slide the plate with the two captive nuts into the chassis and line up with the two centre holes in the bar. Fit 2 x M12 x 1.75 x 35 bolt, spring and flat washers. Repeat on the opposite side. Fit 2 x bolt on wire down through the chassis and out the forward most holes in the bar and secure using M12 flat and spring washers and nuts. (Repeat on the opposite side)



6. Tighten all bolts, starting with the four vertical bolts.



7. Splice wiring into the trailer harness for LED lights using the table below.

Function	Harness	LED
STOP	RED	RED
TAIL	BROWN	BROWN
REVERSE	BLACK	BLACK
L/H INDICATOR	YELLOW	YELLOW
R/H INDICATOR	GREEN	GREEN
EARTH	WHITE	WHITE

8. Apply a thin bead of silicon to the underside of the tread plate. Lay the plastic strip on the tread plate, then apply another bead of silicon to the plastic strip. Screw the tread plate to the bar using M6 hex head screws.
9. If spare wheel carriers or jerry can holder are to be fitted see separate fitting instructions.

Kaymar

Fitting Instructions



Bolt Kits for Triton MQ

- 8 M12 X 35 x 1.75
- 20 M12 HD Washers
- 16 M12 Spring Washers
- 12 M12 x 1.75 Nuts
- 2 Nut Plates (M12 x 1.75)
- 2 Bolt Plates (M12 x 45 x 1.75)
- 4 Bolt on wire
- 1 1.5 metre 7 core wire
- 10 Male terminals
- 10 Female terminals

